

**KMS Technologies - KJT Enterprises Inc.**

**Presentation**

Bühnemann, J., Henke, C., Zerilli, A., Strack,  
K.-M., Müller, C., Krieger, M.

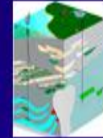
2002

**Bringing Complex Salt Structures into  
Focus  
A Novel Integrated Approach**

Society of Exploration Geophysicists,  
Annual Meeting, Salt Lake City,  
Expanded Abstracts



KMS Technologies



# Bringing Complex Salt Structures Into Focus

## A Novel Integrated Approach

Jan Bühnemann, Christian Henke  
RWE Dea AG, Hamburg, Germany

Andrea Zerilli, Kurt Strack  
KMS Technologies, Houston, TX, USA

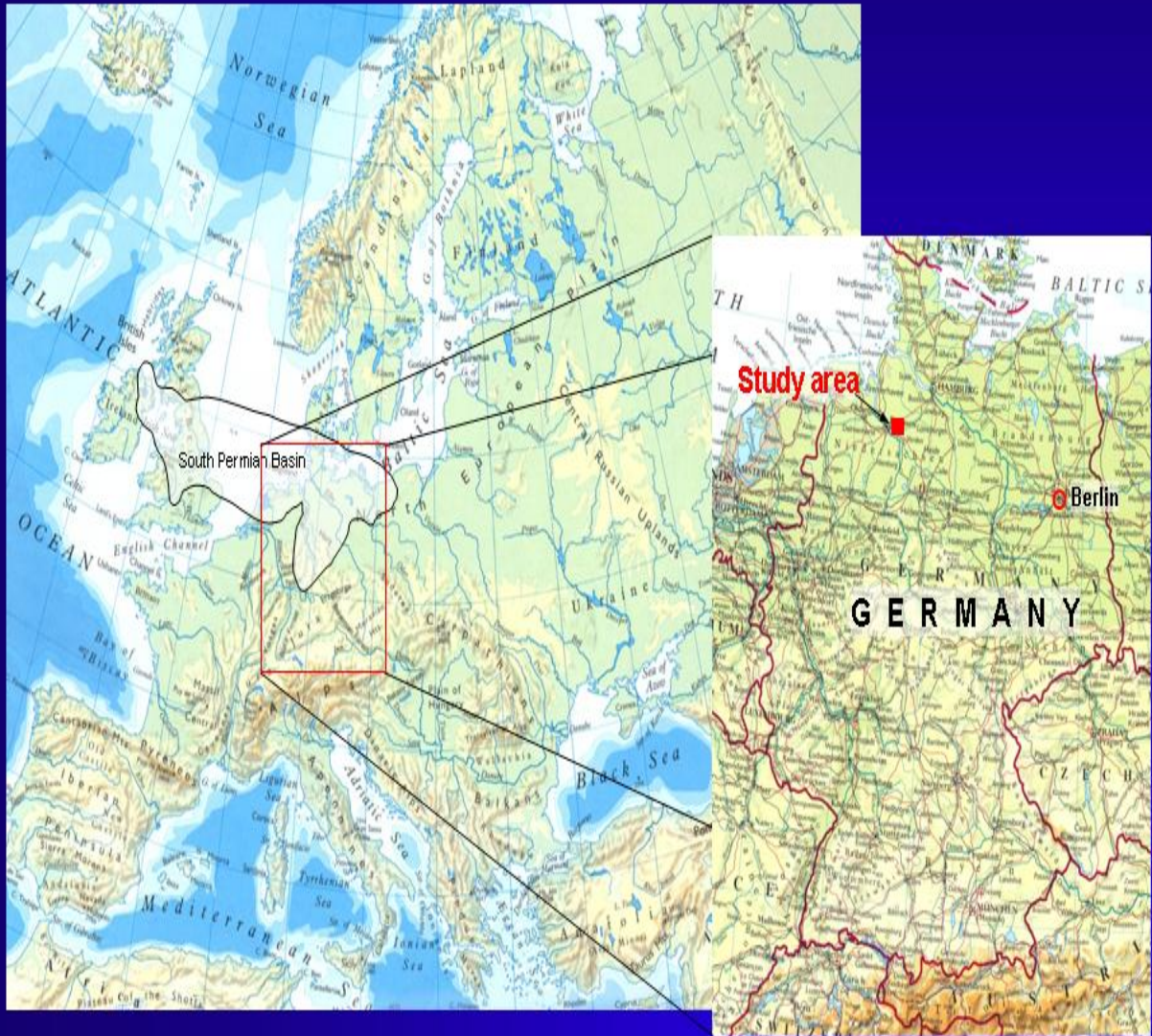
Christina Müller, Markus Krieger  
TERRASYS Geophysics, Hamburg, Germany

# Outline

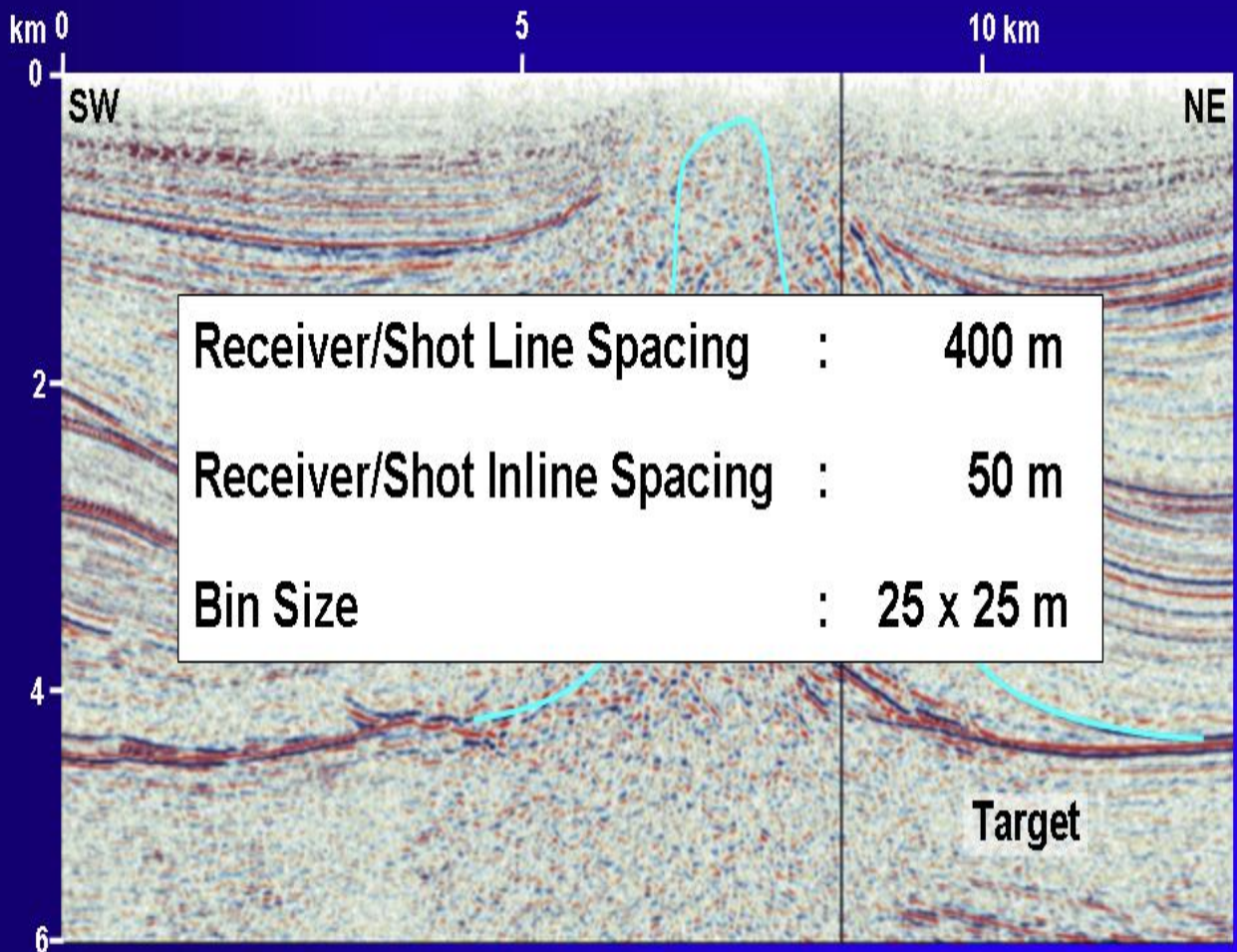


- Data Base & Independent Results:  
Seismic, Gravity & Magnetotellurics
- Integrated Interpretation
- Conclusions

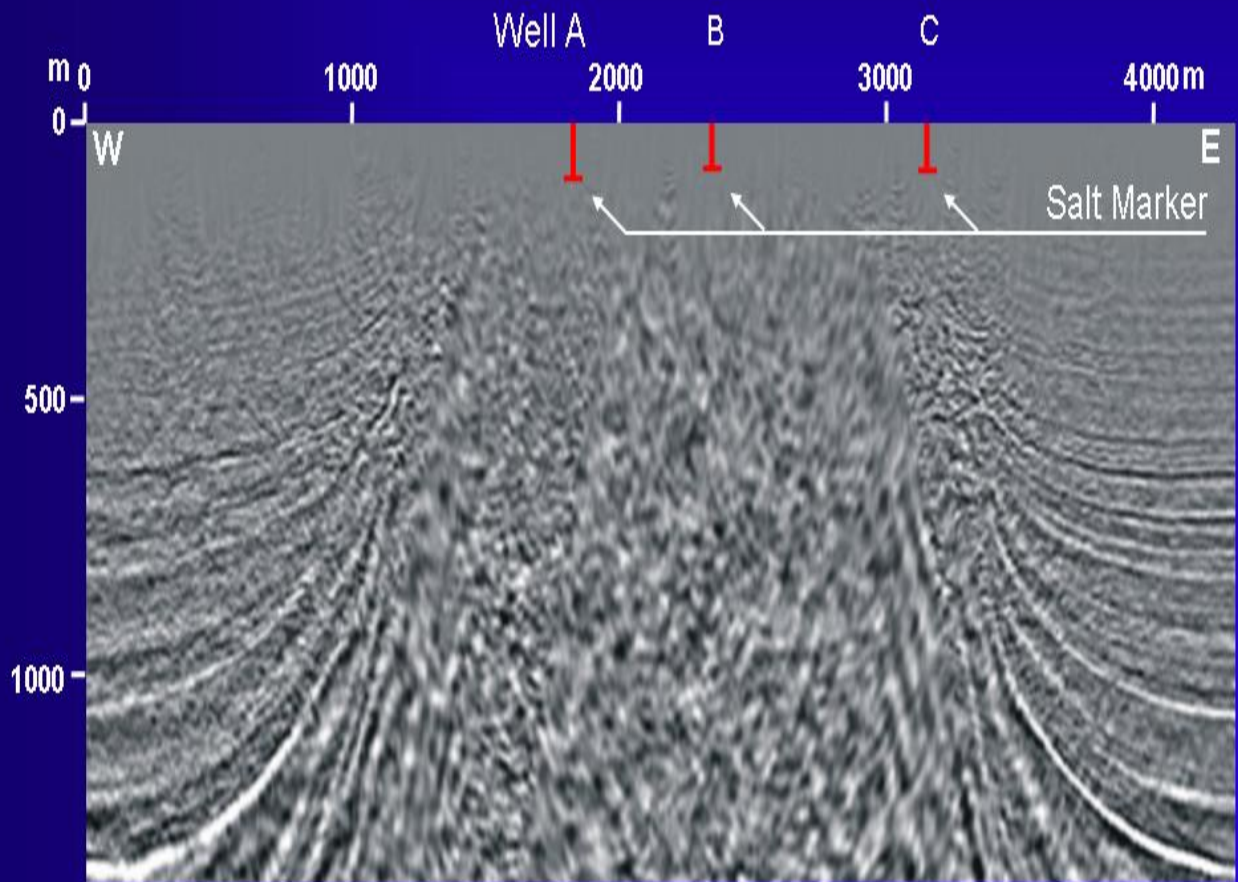
# Location



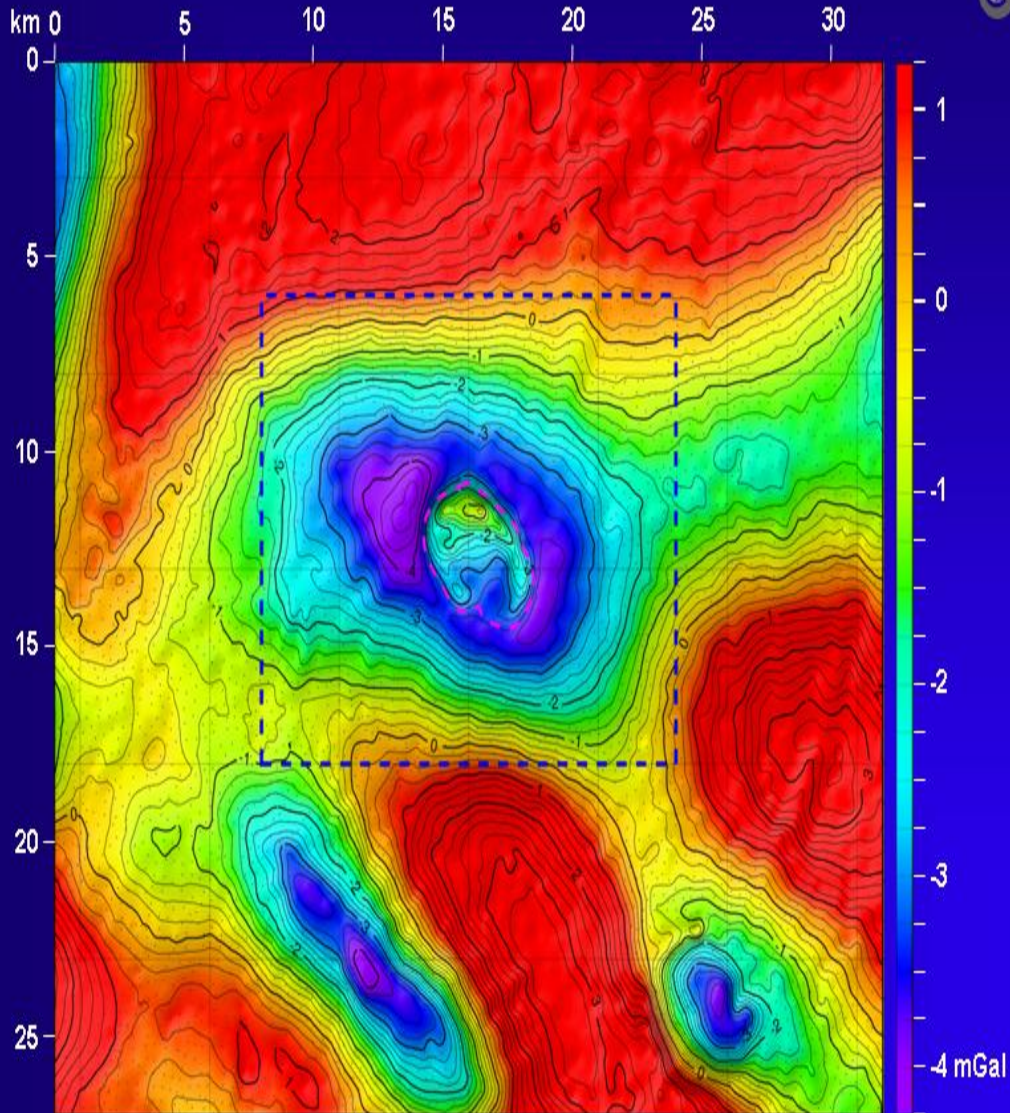
# 3-D Seismic Data Base



# Shallow Seismic Results

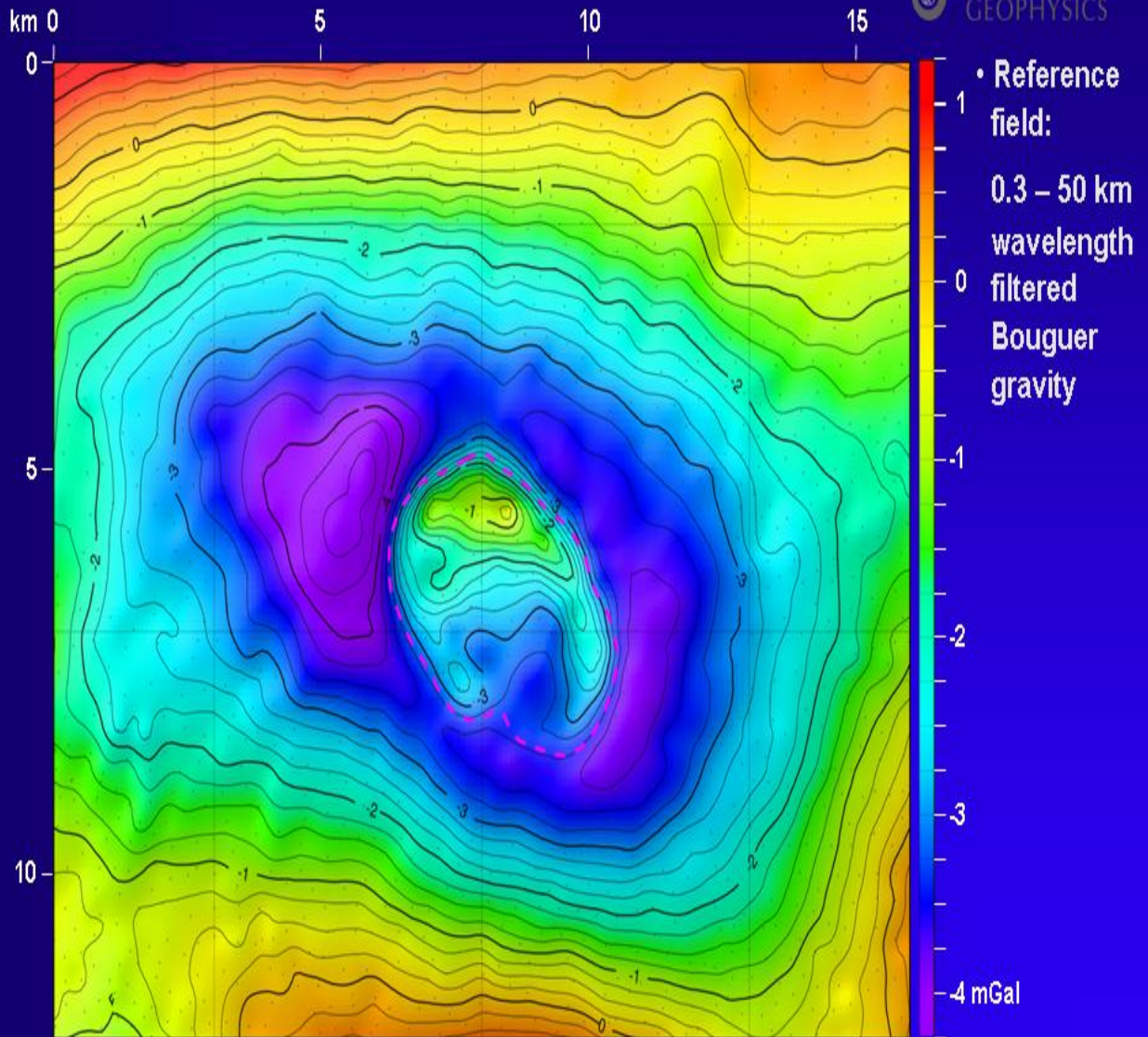


# Gravity – Analysis



- Reference field:  
0.3 – 50 km wavelength filtered Bouguer gravity
- Dense coverage:  
7-8 stn./km<sup>2</sup>

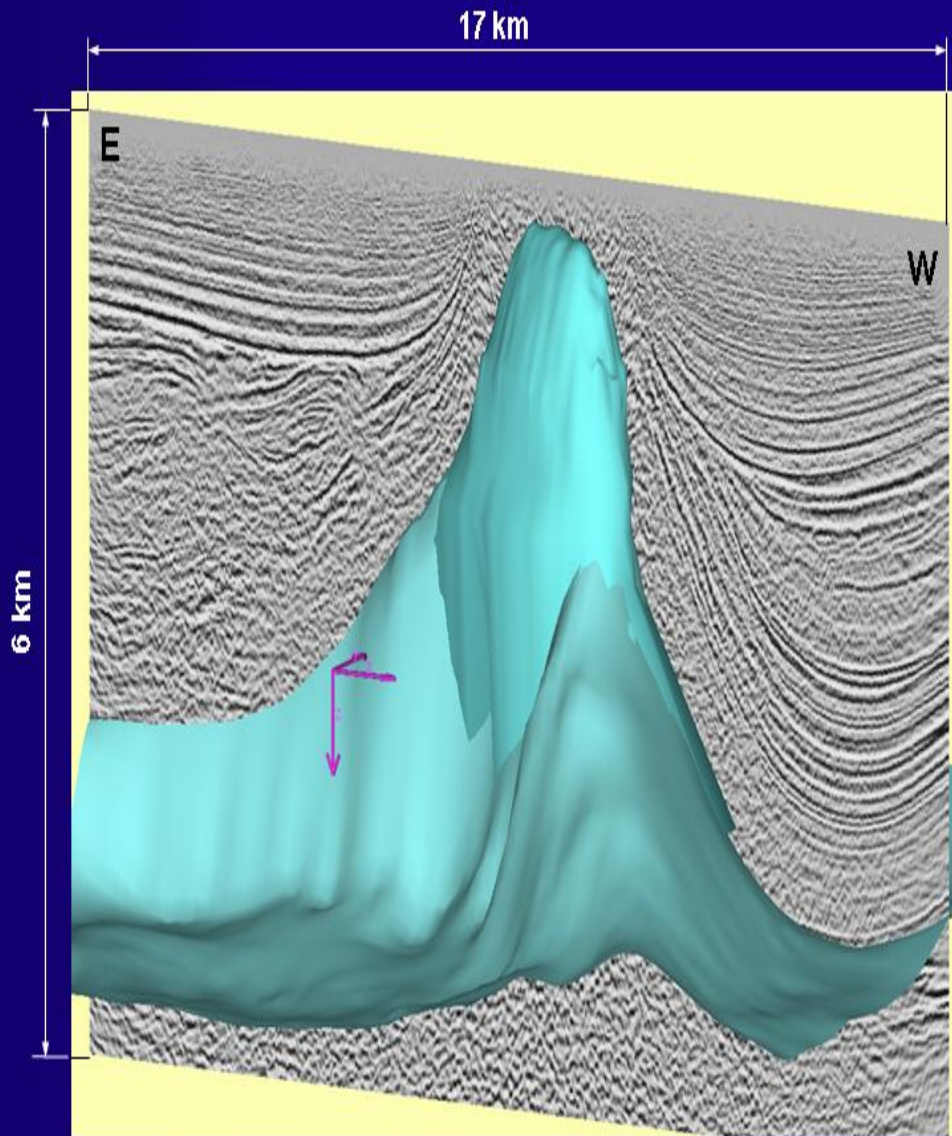
# Gravity – Area of Interest



Slide8.JPG



# Gravity – Previous Model

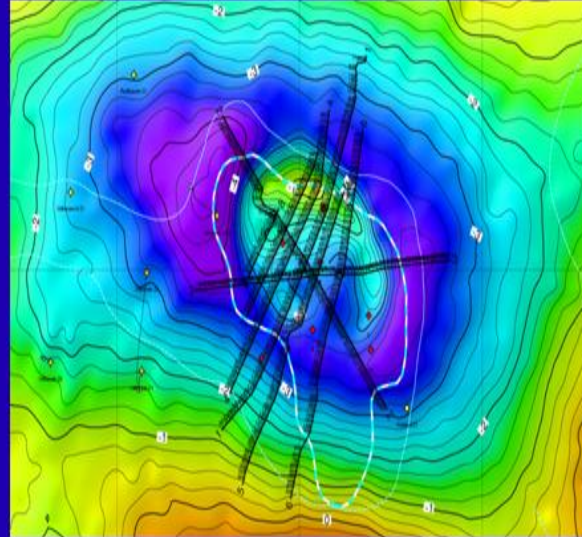


- Top salt: 400 m
- Shallow wells not available
- Poorly constrained

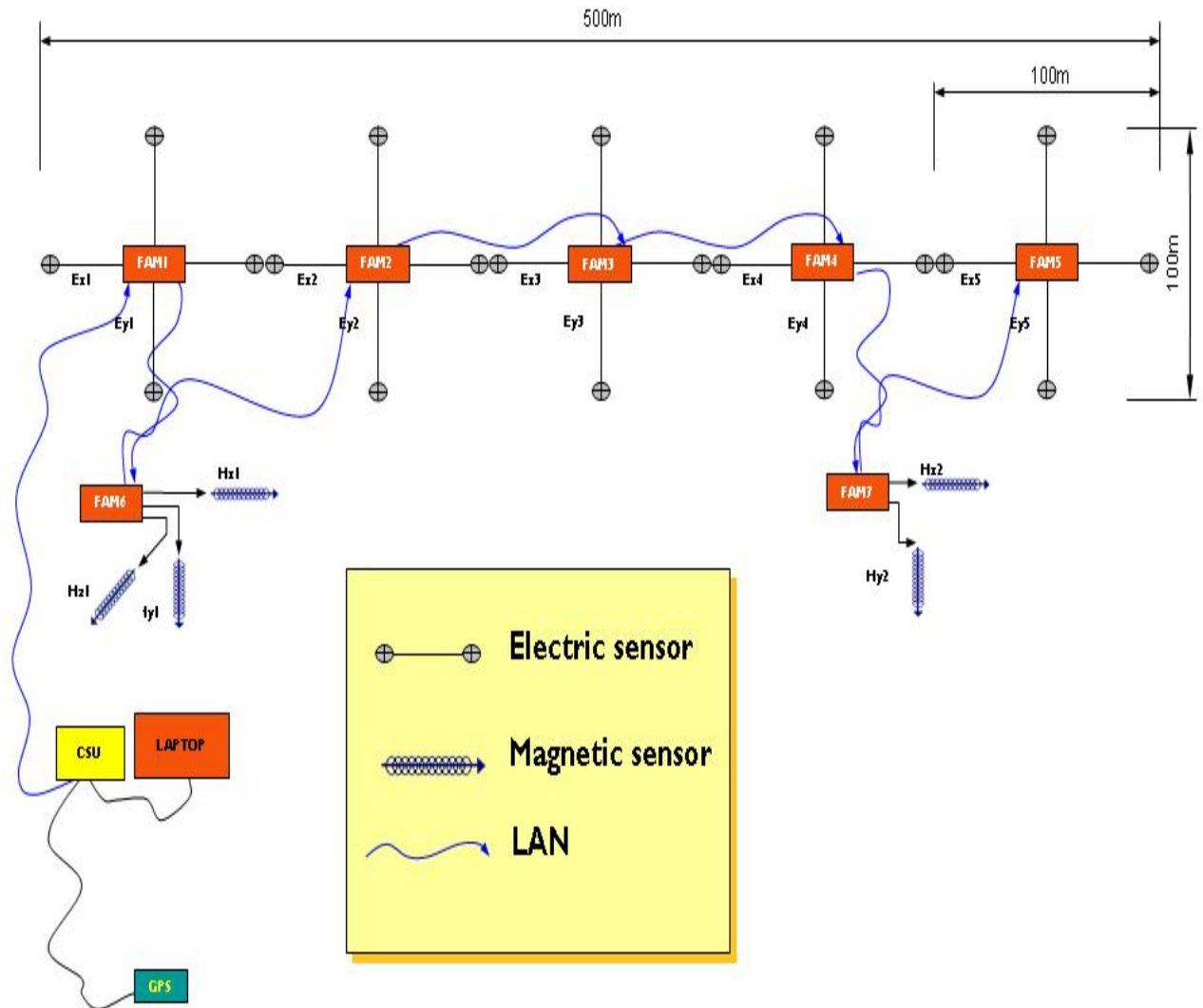
# High Resolution MT Acquisition



- Frequency range : 6 bands  
25Hz - 48 kHz
- Remote reference : 150 km away
- Total lines / sites : 8 / 400
- Inline site spacing : 100 m



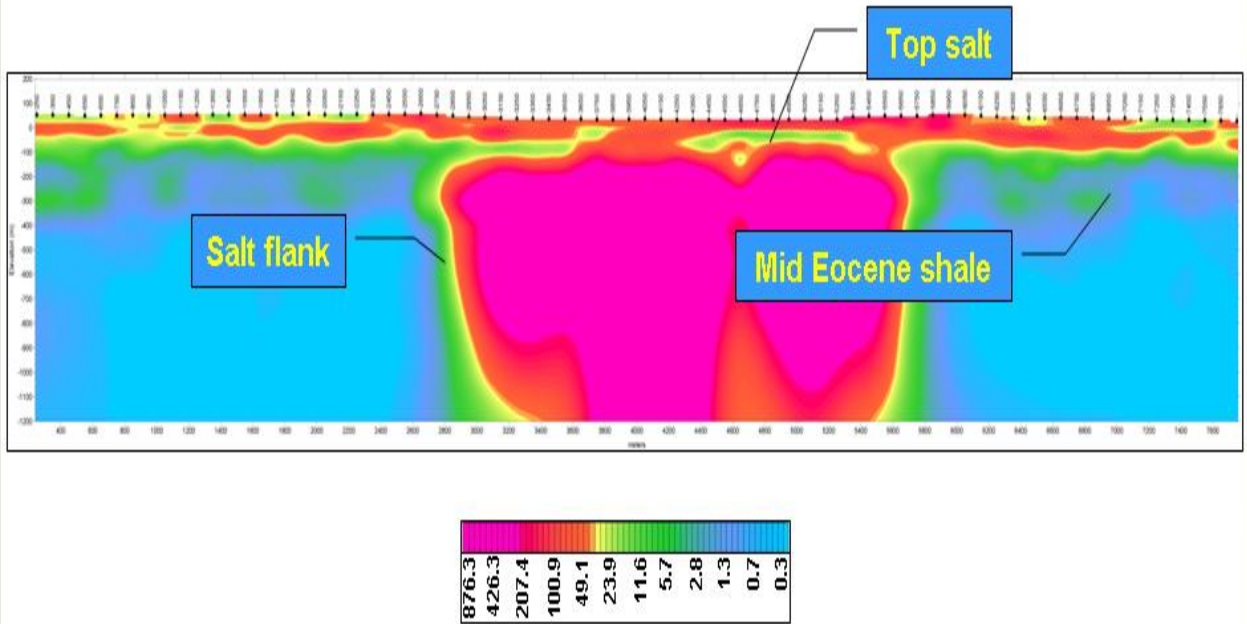
# High Res MT Acquisition Setup



# High Res MT Workflow



## Depth Imaging



Time

# Outline



- Data Base and Independent Results:  
Seismic, Gravity and Magnetotellurics
- **Integrated Interpretation**
- Conclusions

# Integrated Interpretation



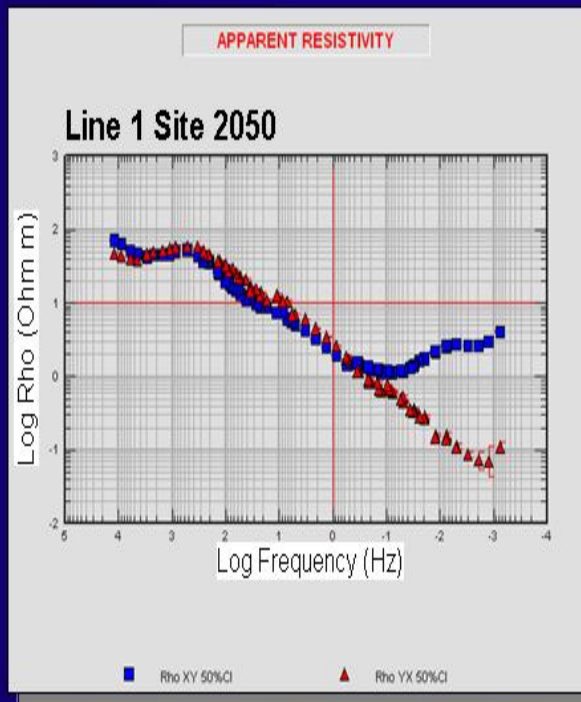
- 1<sup>st</sup> step: Generation of initial model
- 2<sup>nd</sup> step: Refinement of salt geometry by HRMT
- 3<sup>rd</sup> step: Gravity modelling of deep salt  
with upper salt geometry constrained

# Generation of Initial Model



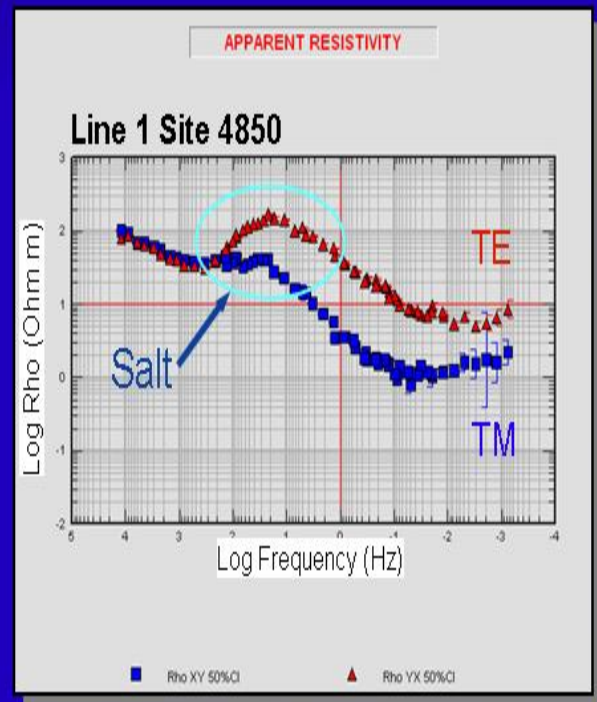
- Sediment interpretation from seismic
- Formation densities from initial data base
- Shallow water wells
- First pass HRMT depth imaging outlines new top salt geometry

# High Res MT Data Analysis



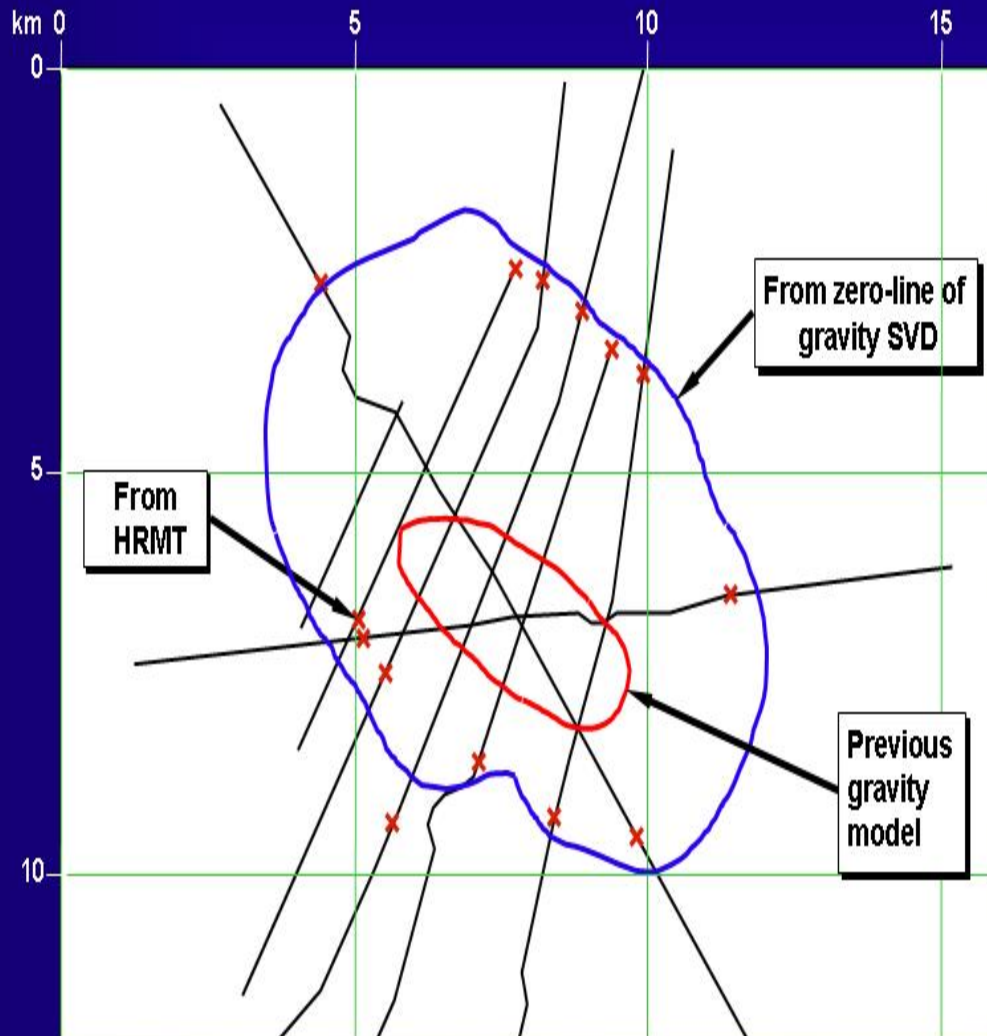
High frequency – shallow

Low frequency – deep



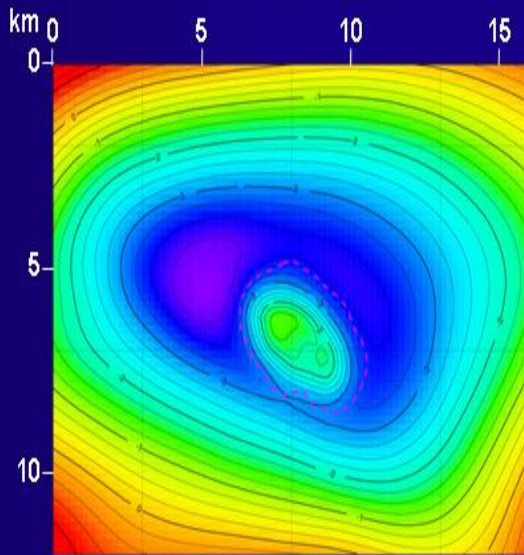


# Top Salt – Lateral Extension

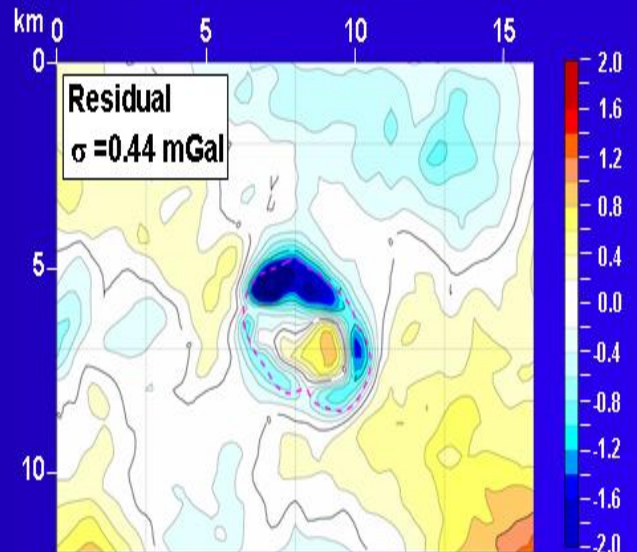
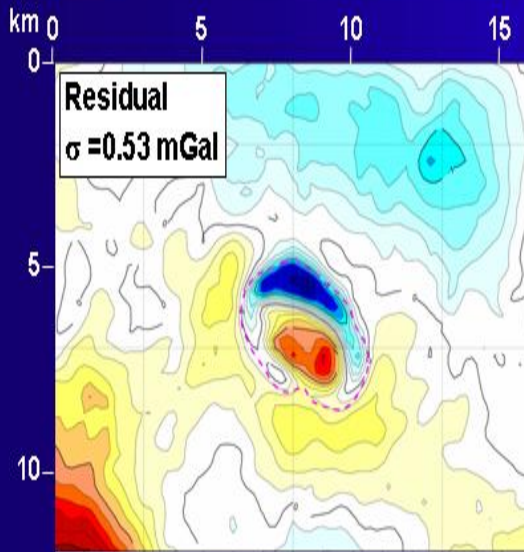
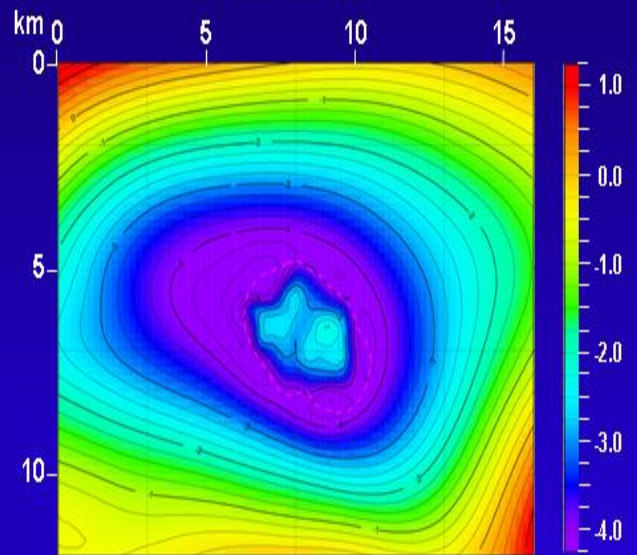


# 3-D Gravity Modelling

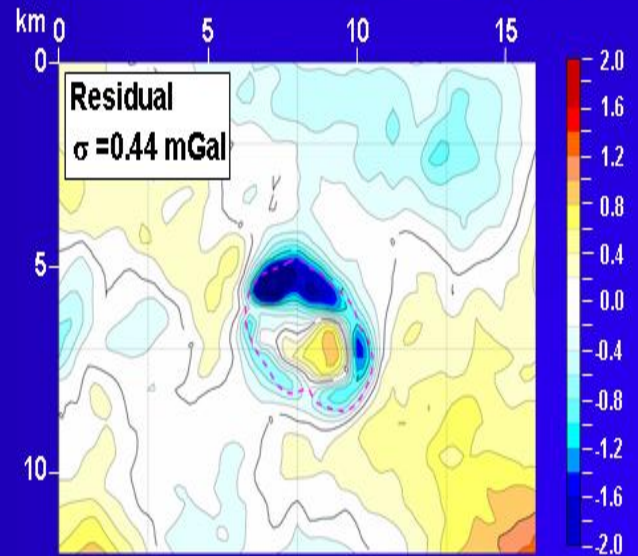
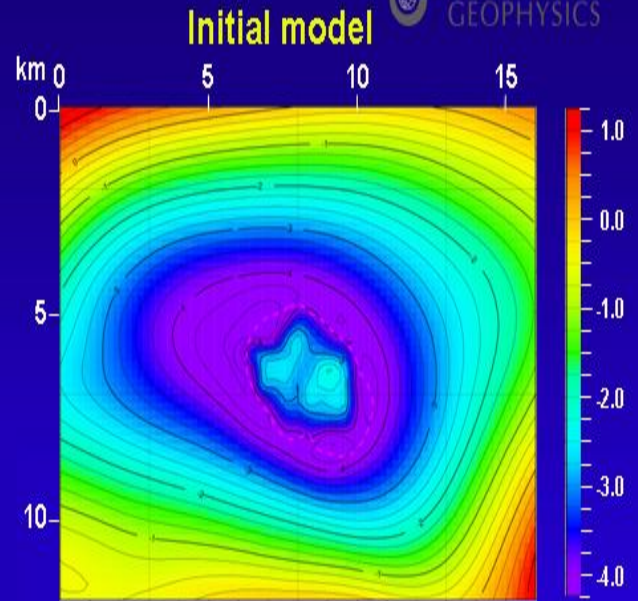
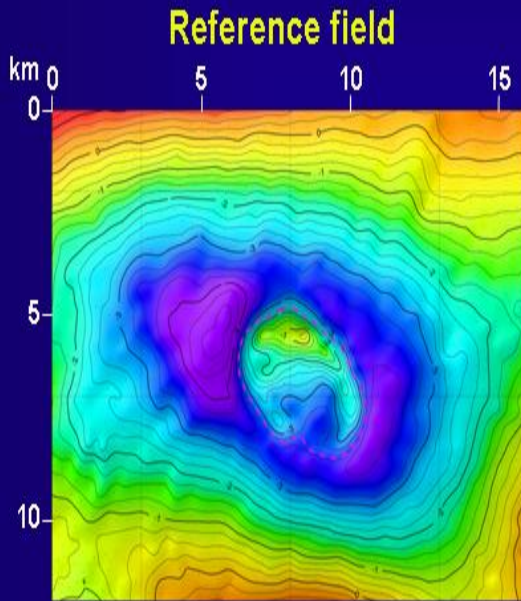
Previous model



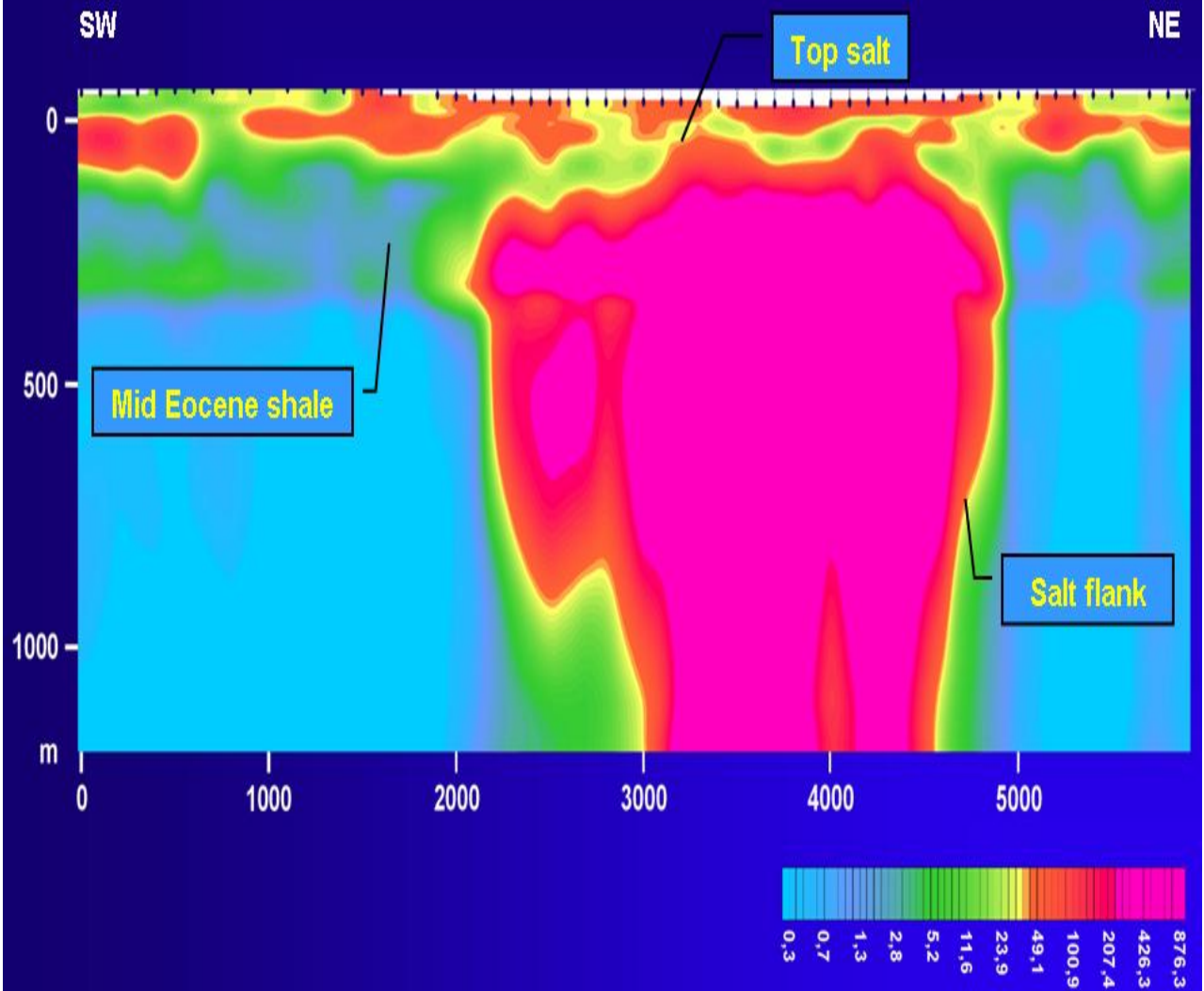
Initial model



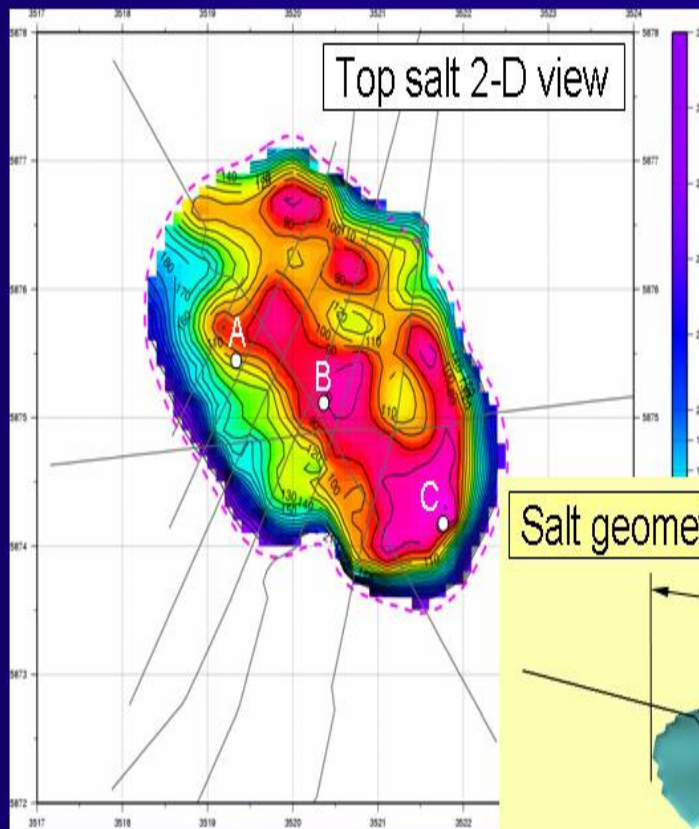
# 3-D Gravity Modelling



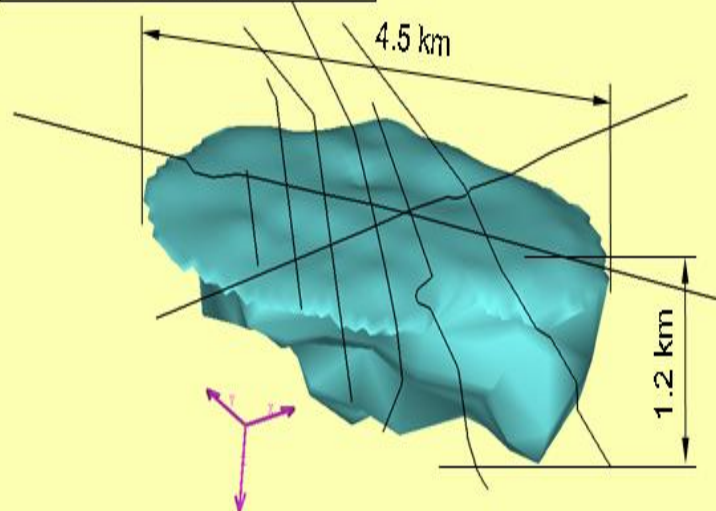
# High Res MT Depth Imaging



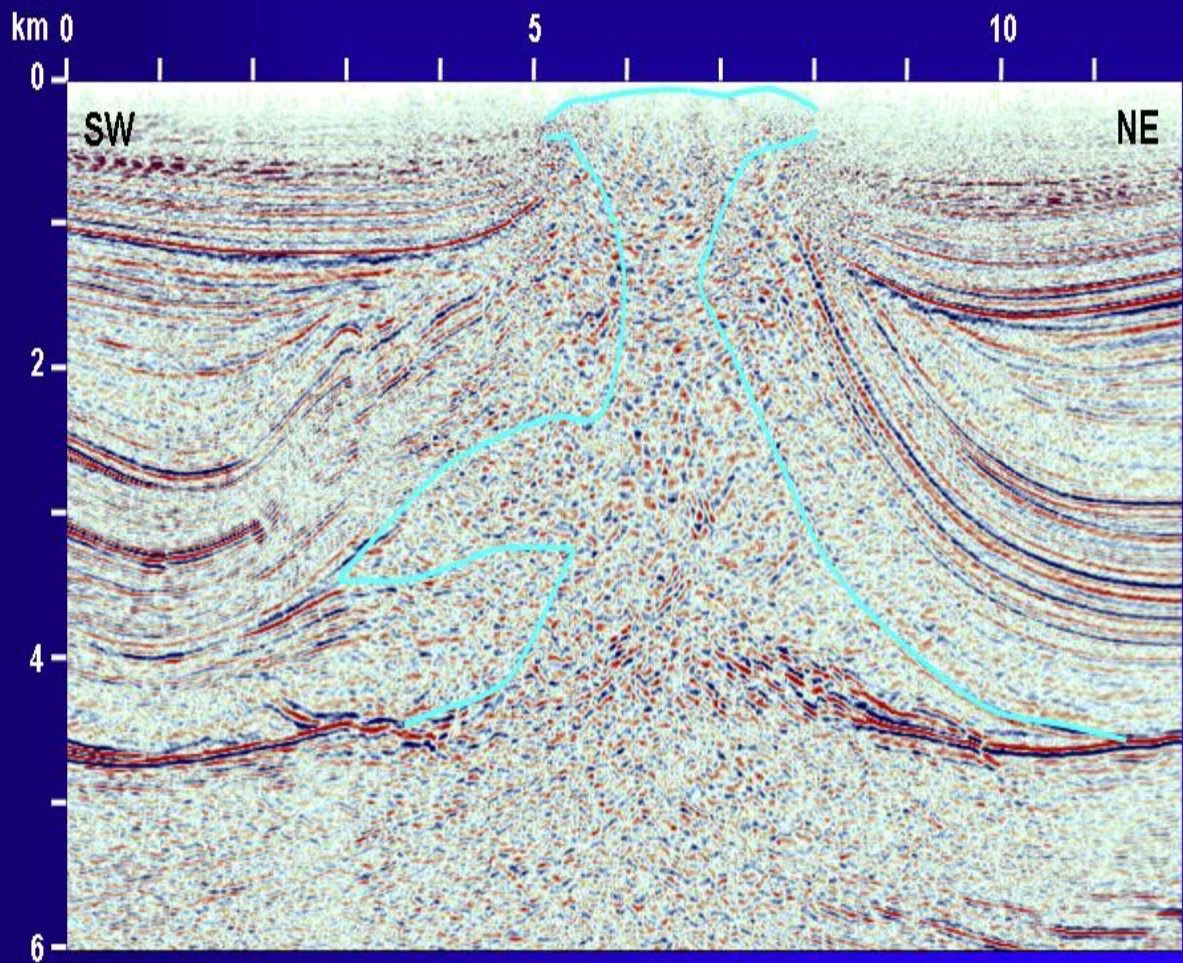
# High Res MT Salt Geometry



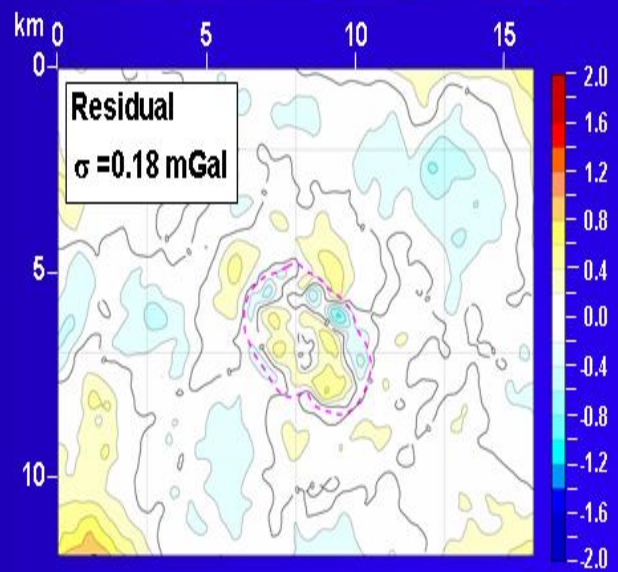
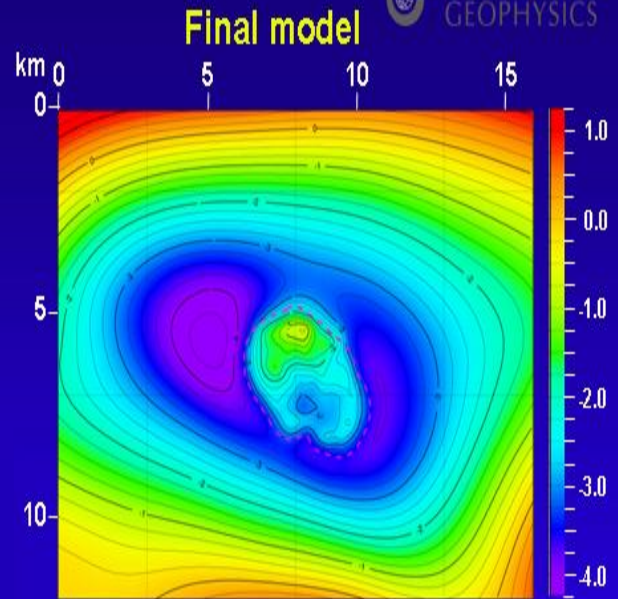
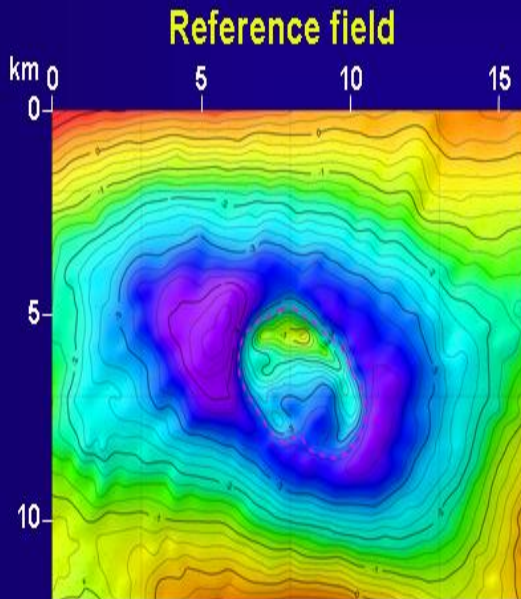
Salt geometry 3-D view



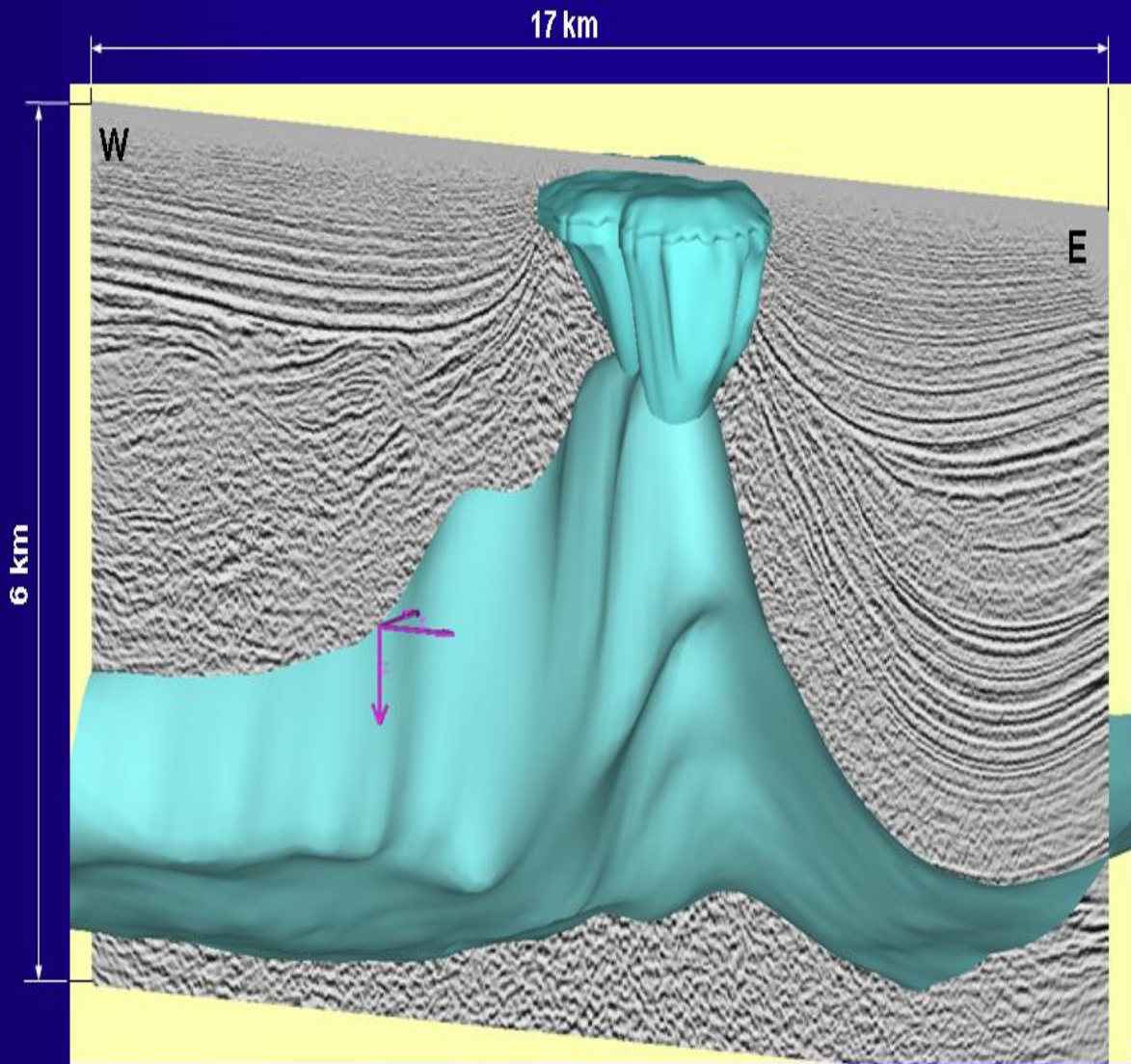
# Final 3-D Gravity Modelling



# Final 3-D Gravity Modelling

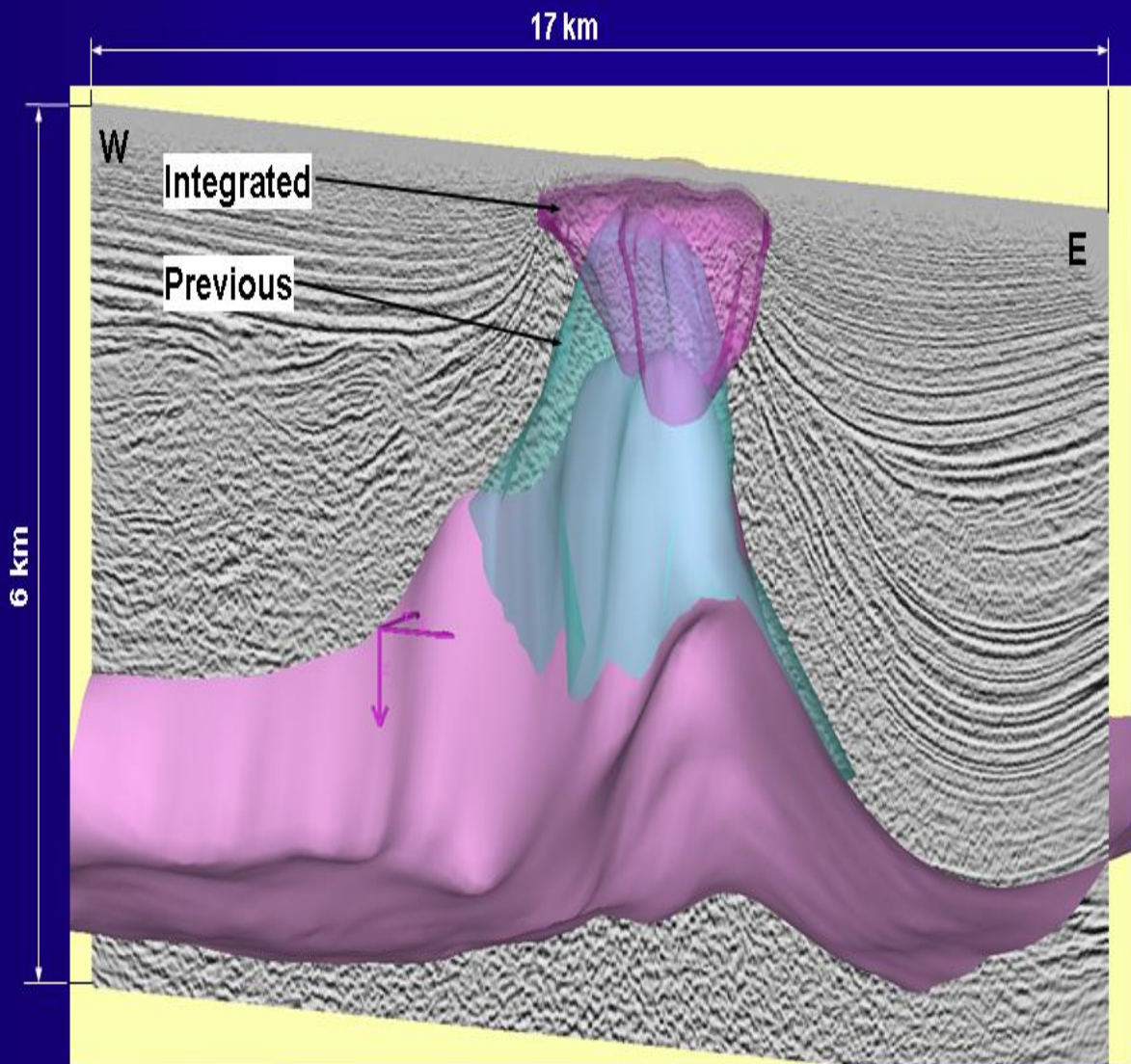


# New Integrated Model





# Model Improvements



# Conclusions



- Advanced seismic depth imaging, 3-D gravity & high res MT proven to provide superior interpretation of complex salt structures
- New integrated model shows dramatic improvements over existing database
- Innovative technology developed & deployed

# Acknowledgements



We wish to thank RWE Dea  
for its kind permission to present current data



# High Resolution MT Data Flow



**Acquisition** • System control, data download

**Processing** • From time series to sounding curves

**Interpretation** • Getting the resistivity depth image

KMS Technologies – KJT Enterprises Inc.  
6420 Richmond Ave., Suite 610  
Houston, Texas, 77057, USA  
Tel: 713.532.8144

[info@kmstechnologies.com](mailto:info@kmstechnologies.com)

Please visit us  
<http://www.kmstechnologies.com//>